



---

# MASTERPLAN

NEW DINING HALL



# MASTERPLAN

NEW DINING HALL



# DINING HALL IN FUTURE CAMPUS MASTERPLAN

## NEW DINING HALL



---

# CAMPUS PLANNING

NEW DINING HALL

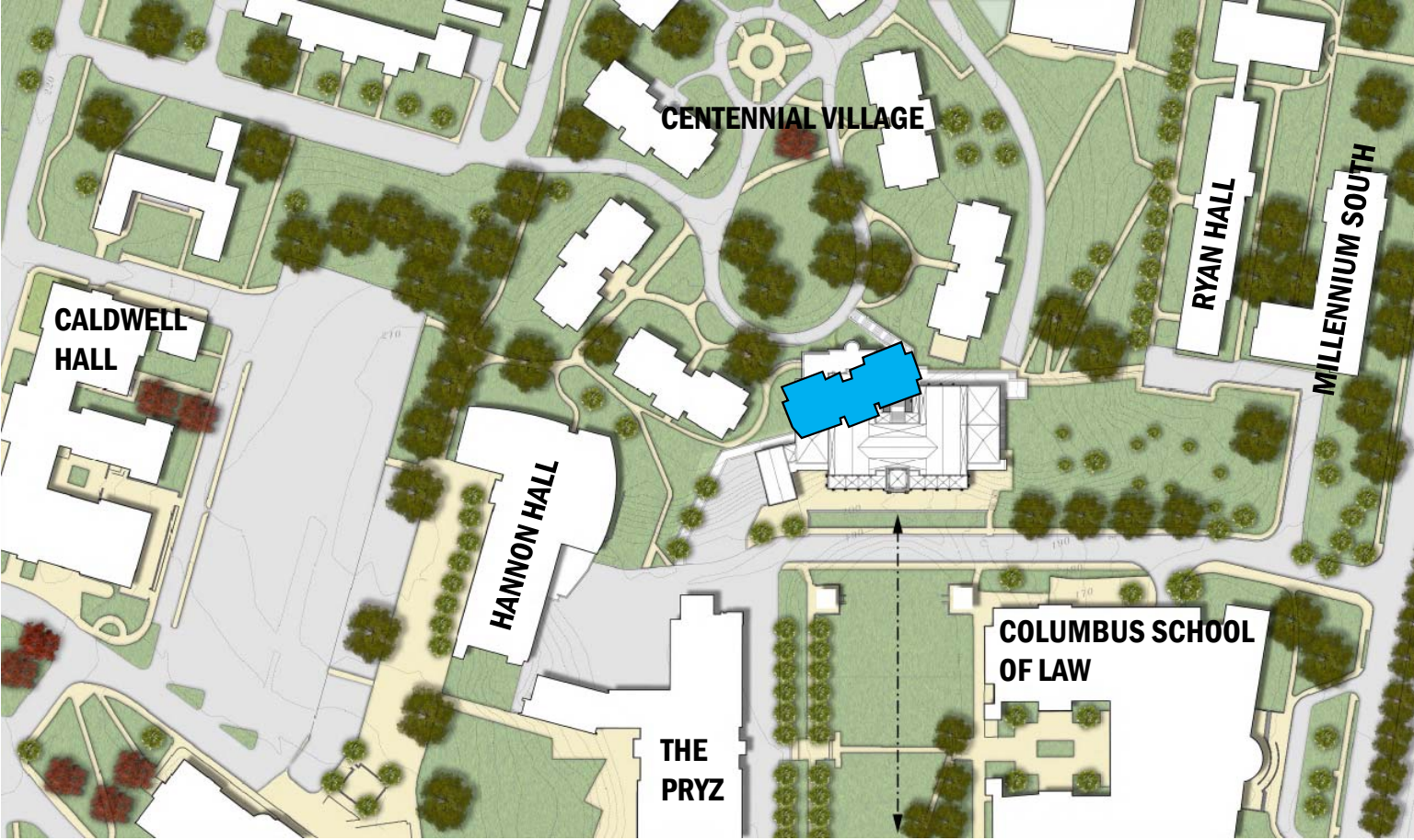


darkishwatercolors.com '19

PERKINS EASTMAN CATHOLIC UNIVERSITY OF AMERICA

# DINING HALL IN EXISTING CONTEXT

NEW DINING HALL



---

# PRIMARY ELEVATIONS

NEW DINING HALL

South Elevation



---

# PRIMARY ELEVATIONS

NEW DINING HALL

North Elevation





---

# COLLEGE GOTHIC PRECEDENT

UNIVERSITY OF MICHIGAN SOUTH HALL



PERKINS EASTMAN CATHOLIC UNIVERSITY OF AMERICA

---

# COLLEGIATE GOTHIC PRECEDENT

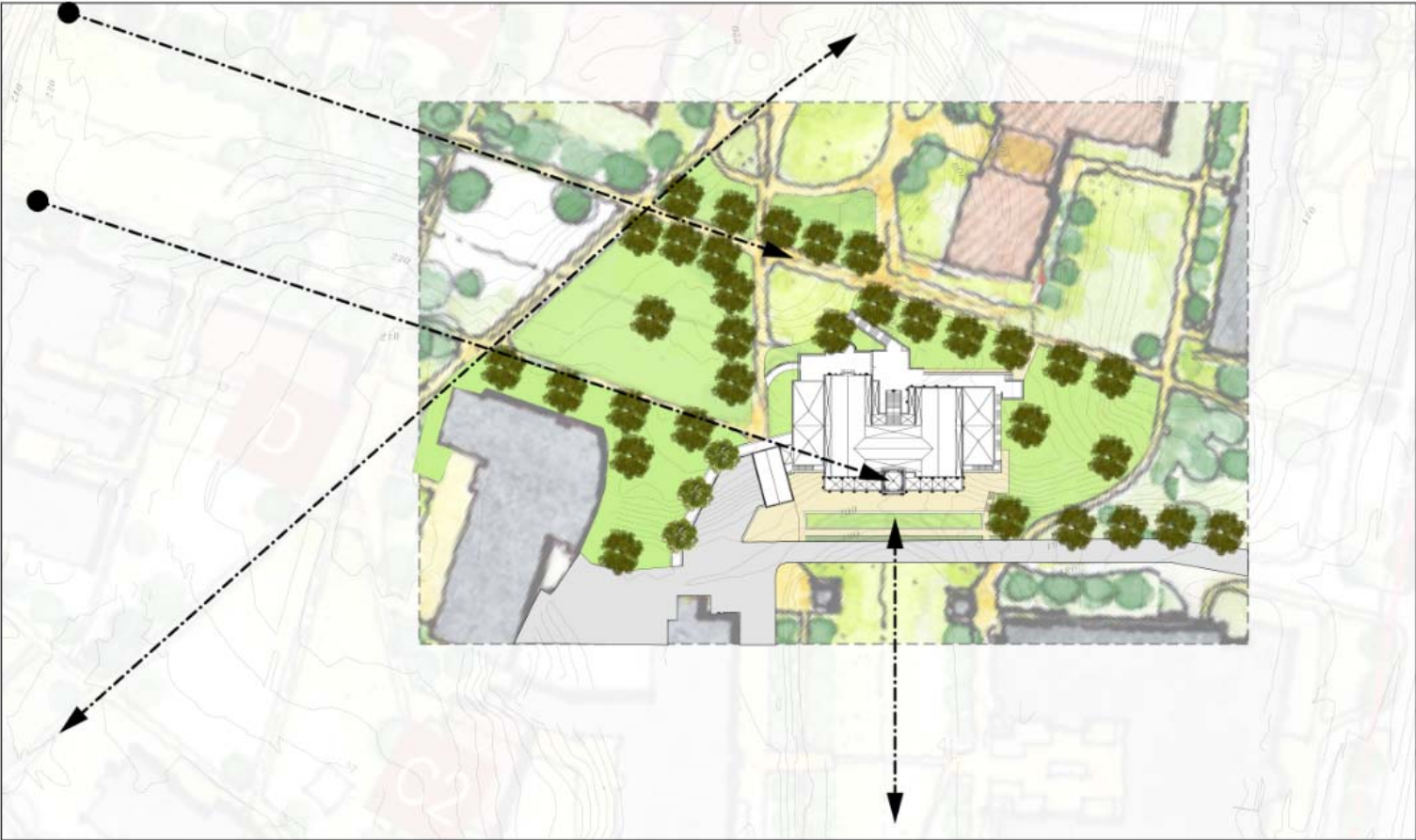
UNIVERSITY OF MICHIGAN SOUTH HALL



---

# DINING HALL IN FUTURE CAMPUS MASTERPLAN

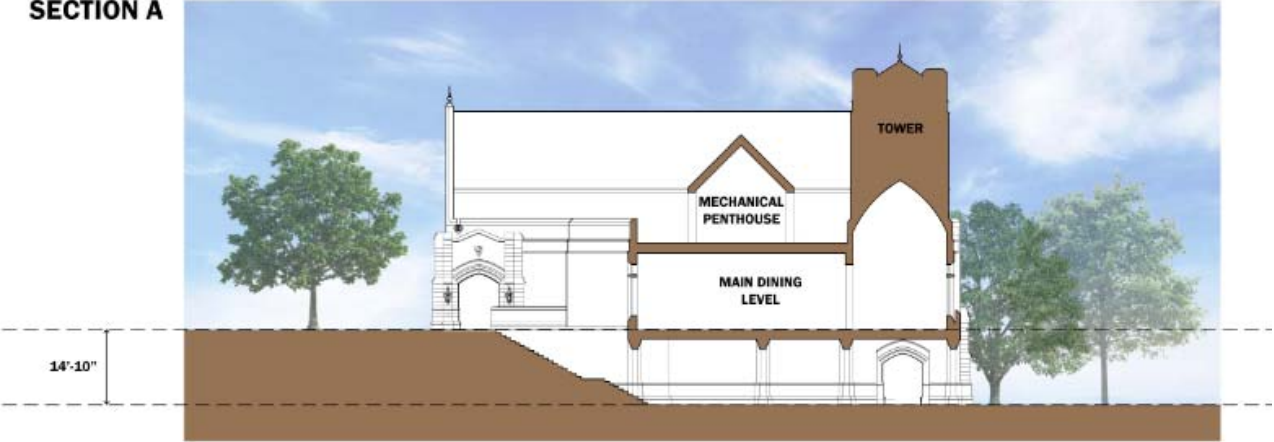
NEW DINING HALL



# CAMPUS PLANNING

## NEW DINING HALL

SECTION A



SECTION B



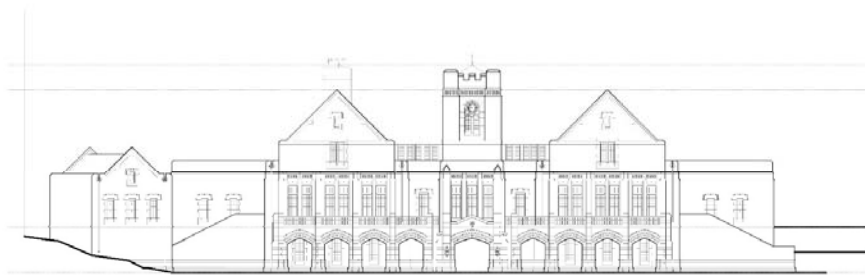
# ZONING SUBMISSION

## NEW DINING HALL

### THE CATHOLIC UNIVERSITY OF AMERICA DINING COMMONS

620 MICHIGAN AVE NE WASHINGTON, D.C. 20054

<b>Client:</b> THE CATHOLIC UNIVERSITY OF AMERICA  620 MICHIGAN AVE WASHINGTON, DC 20054	<b>Construction Manager:</b> YBO  181	<b>Civil / Site:</b> BUNNEL, KLEPPER & HAIL  2000 WOODLEY BL, SUITE 200 WASHINGTON, DC 20018	<b>Landscape:</b> SMITH GROUP  200 WOODLEY BL, SUITE 200 WASHINGTON, DC 20018	<b>Structure:</b> TABERER CHOI & O'NEILL ASSOCIATES  1000 PENNSYLVANIA AVE, SUITE 1000 WASHINGTON, DC 20004	<b>Mechanical &amp; Plumbing:</b> MULLER ASSOCIATES  1000 PENNSYLVANIA AVE, SUITE 1000 WASHINGTON, DC 20004	<b>Electrical:</b> MUELLER ASSOCIATES  1000 PENNSYLVANIA AVE, SUITE 1000 WASHINGTON, DC 20004	<b>Lighting Consultant:</b> STYRIX LIGHTING DESIGN  1000 PENNSYLVANIA AVE, SUITE 1000 WASHINGTON, DC 20004	<b>Food Service:</b> BECA DESIGN STUDIOS  1000 PENNSYLVANIA AVE, SUITE 1000 WASHINGTON, DC 20004	<b>AVIT, Acoustical &amp; Security Consultant:</b> BETH WILSON & WILLET  1000 PENNSYLVANIA AVE, SUITE 1000 WASHINGTON, DC 20004
---	--	--	---	--	---	---	--	--	---



VICINITY MAP



SITE MAP

**PERKINS EASTMAN**  
1000 PENNSYLVANIA AVE, Suite 200  
WASHINGTON, DC 20004  
T 410 501 1100  
F 410 501 1100

## ZONING COMMISSION SUBMISSION

PROJECT No 74490 00  
APRIL 30, 2019

















